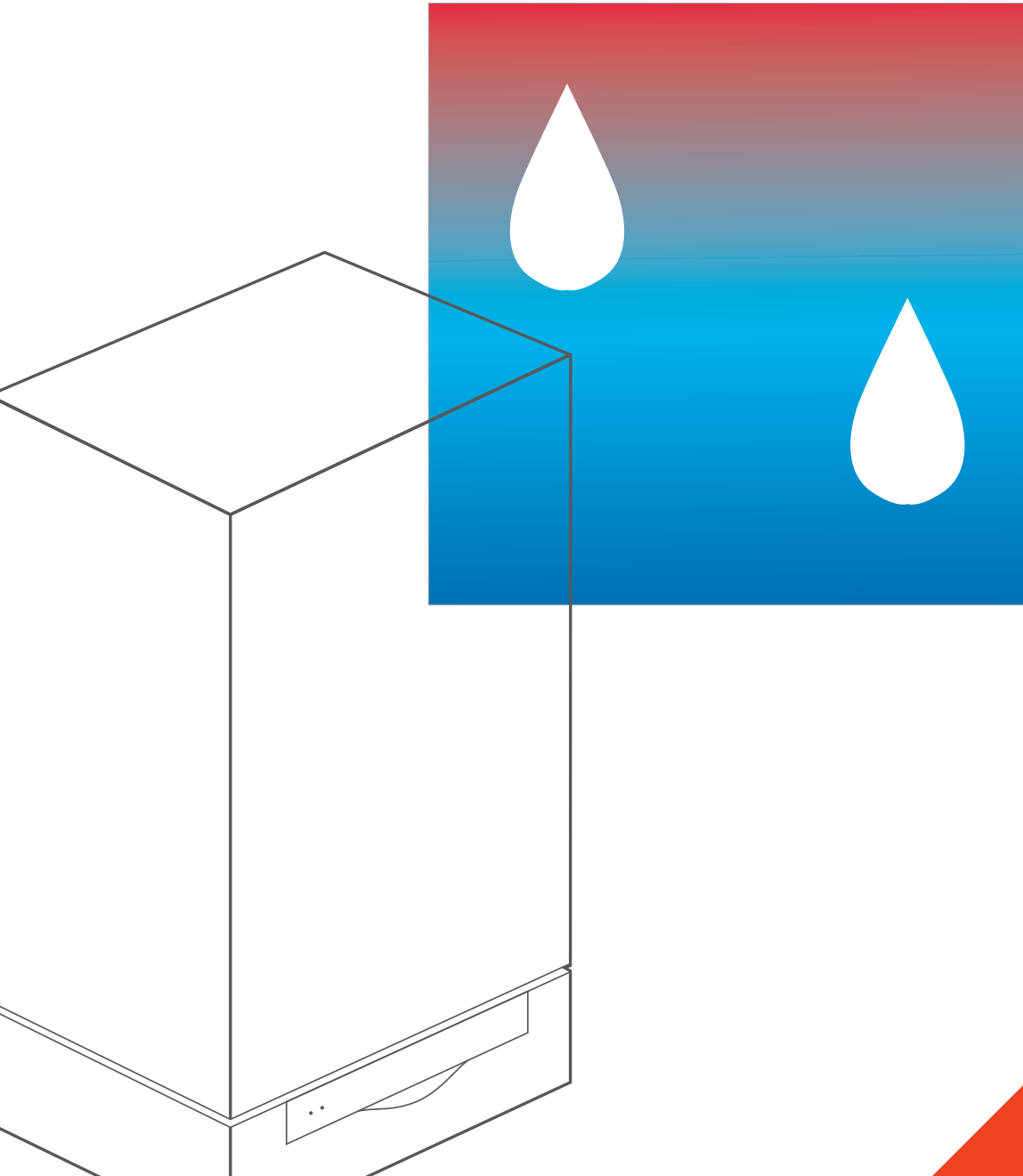


Gas-fired wall-mounted condensing boiler
Single heating boiler: 31 to 370 MBH
Multi-boiler installation: 60 to 1480 MBH

VIESMANN

VITODENS 200®

*Industry-leading condensing technology for
ultimate performance, reliability and comfort*



new

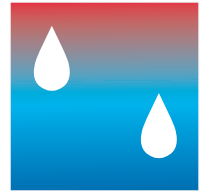
VITODENS 200-W

Equipped with the industry's first intelligent combustion management system and powerful control technology, the new generation Vitodens 200-W gas-fired wall-mount condensing boiler delivers unparalleled performance, reliability and comfort.



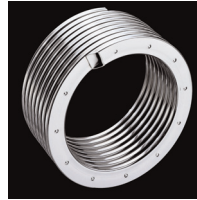
Viessmann Manufacturing Company Inc.
750 McMurray Road
Waterloo, ON • N2V 2G5 • Canada
Tel.: 1-800-387-7373 Fax: (519) 885-0887
www.viessmann.ca

Viessmann Manufacturing Company (U.S.) Inc.
45 Access Road
Warwick, RI • 02886 • U.S.A.
Tel.: 1-800-288-0667 Fax: (401) 732-0590
www.viessmann-us.com

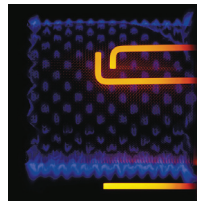


The benefits at a glance:

- new
Best Value in its Class with new industry-leading technology and the most standard features.
- new
Highest Efficiency of up to 98% at full modulation and up to 96.1% A.F.U.E. CSA thermal efficiency to ANSI Z.21.13/ CSA 4.9 of 94.5% (for model WB2B 105 only).
- Lasting Performance** with industry-leading Viessmann made SA240 316 Ti stainless steel Inox-Radial heat exchanger constructed to CSA B51 and ASME Section IV.
- new
Low-Emission Combustion with Viessmann made stainless steel Matrix cylinder burner. Factory calibrated.
- new
Fast Installation and Reduced Maintenance with Lambda Pro, industry-first intelligent combustion management system. Adjusts automatically to gas type and quality. No fuel conversion kit required.
- new
Powerful and User-Friendly Viessmann Vitotronic on-board multi-function outdoor reset boiler and system control for multi-temperature space and DHW heating.
- new
Expanded Application Range with increased capacity up to 370 MBH. Multi-boiler installation up to 1480 MBH with up to 4 boilers (models WB2B 45 and up).
- new
Greater Venting Flexibility with increased vent length (up to 180') and multiple venting options.
 - Horizontal or vertical sealed combustion coaxial venting.†
 - Horizontal, vertical or hybrid sealed combustion double-pipe venting.*
 - Horizontal or vertical single-wall venting.*



Viessmann made stainless steel Inox-Radial heat exchanger

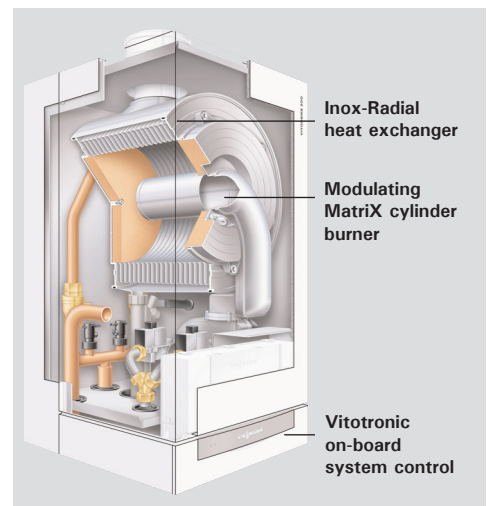


Viessmann made stainless steel Matrix cylinder burner



Now equipped with Lambda Pro.
 Industry's first intelligent combustion management system.

- new
Compact, Lightweight Design and zero clearance to combustibles.
- Extremely Quiet Operation;** quieter than most refrigerators.
- True High-Altitude Operation** up to 10,000 ft / 3,000 m with simple electronic adjustment.
- Limited Lifetime Warranty** in residential applications.



Inox-Radial heat exchanger
Modulating Matrix cylinder burner
Vitotronic on-board system control

VITODENS 200-W		WB2B	19	26	35	45	60	80	105
Rated input range		MBH	31-67	31-93	31-125	60-160	60-212	104-285	104-370
Total dimensions	Width	inches	17¾	17¾	17¾	19	19	19	19
	Height	inches	33½	33½	33½	33½	33½	33½	33½
	Depth	inches	14	14	14	15	15	21	21
Weight†		lbs	102	102	102	155	155	225	225

†Weight does not include installation fittings. †Factory supplied. *Field supplied.
 © This trademark is registered with the U.S. Patent and Trademark Office.



Information subject to change without notice.